

BTT TFT35 V2.0 Bootloader flashing guide (CH340 debugger)

1. Download FlyMcu

https://drive.google.com/file/d/1hDS0_tiPa3EGrr34oiXl7z4gcTtiMvA8/view?usp=sharing

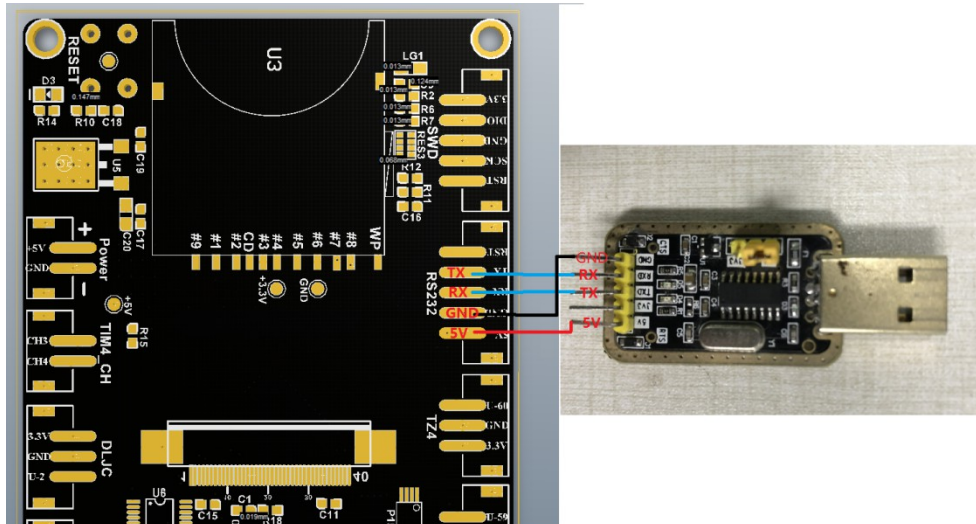
2. Connect the CH340 debugger to the RS232 port on BTT TFT35 V2.0

TX<->RX

RX<->TX

GND<->GND

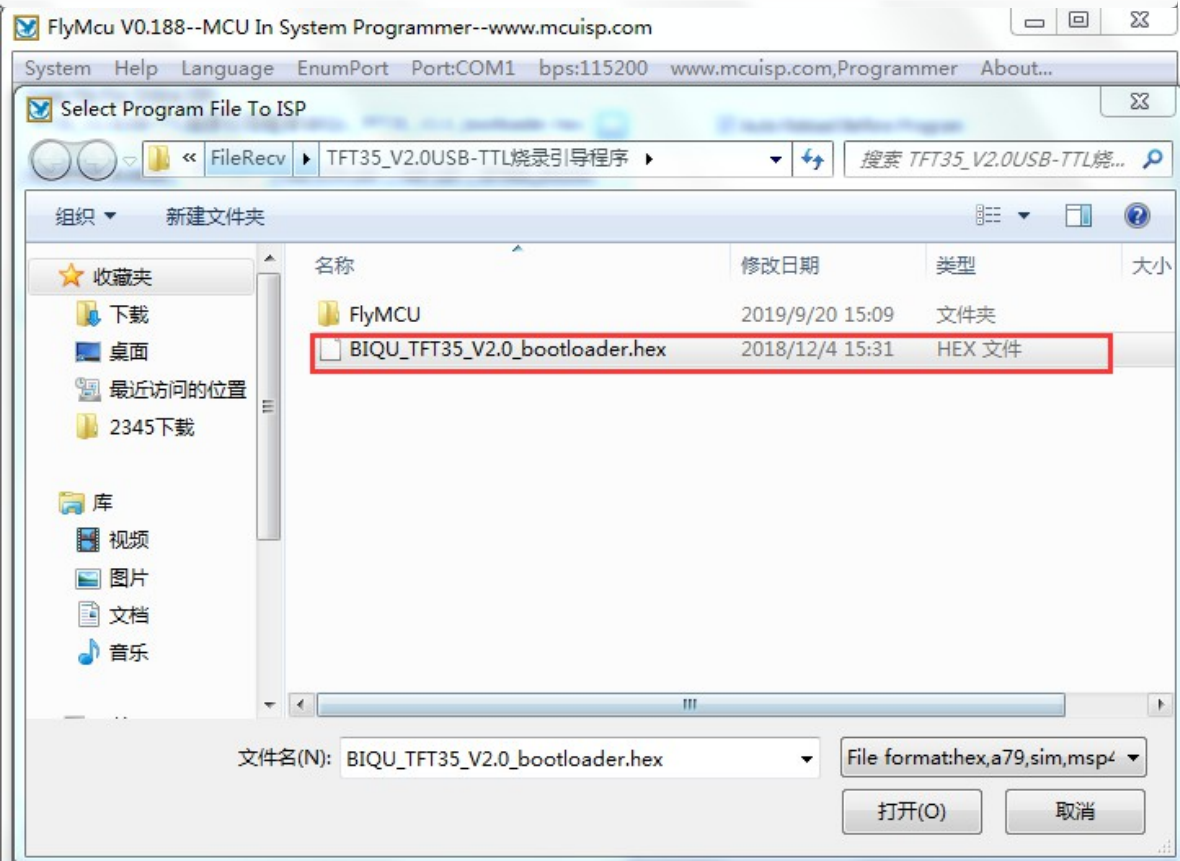
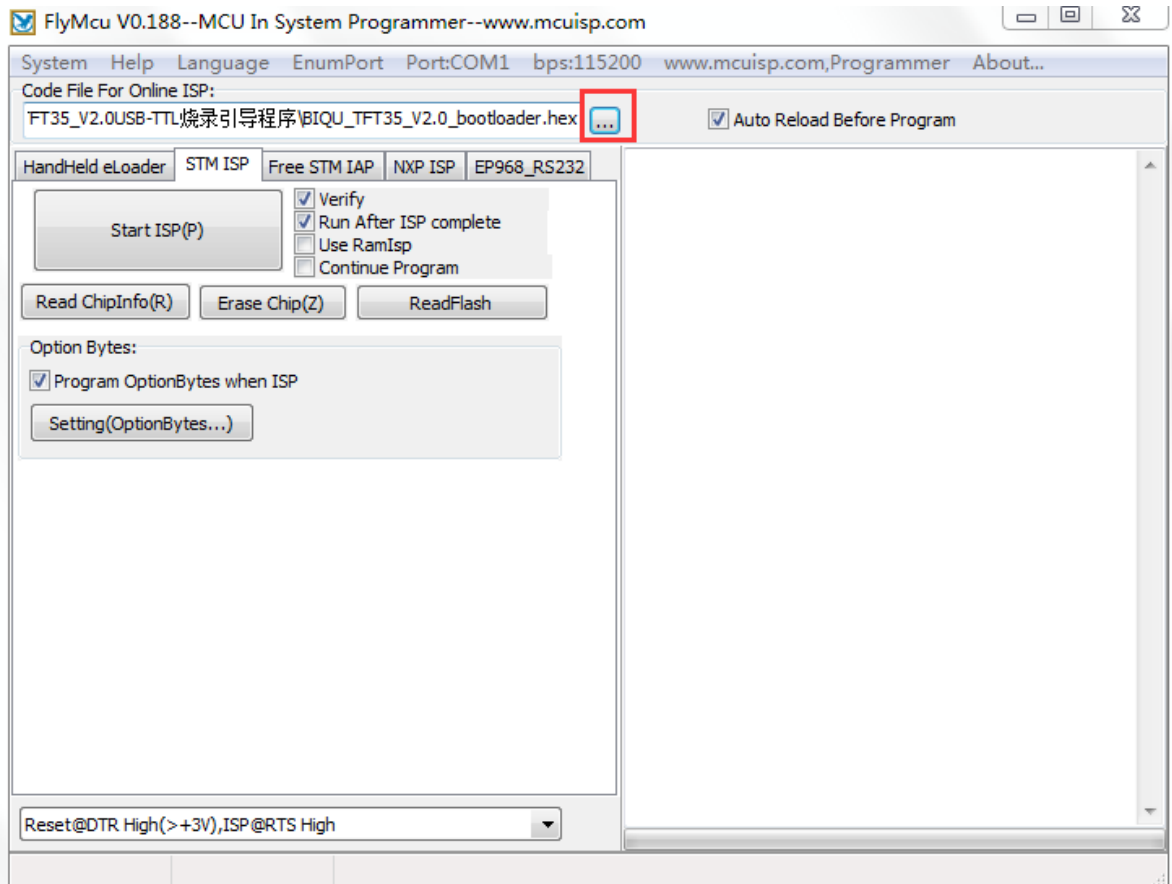
5V<->5V



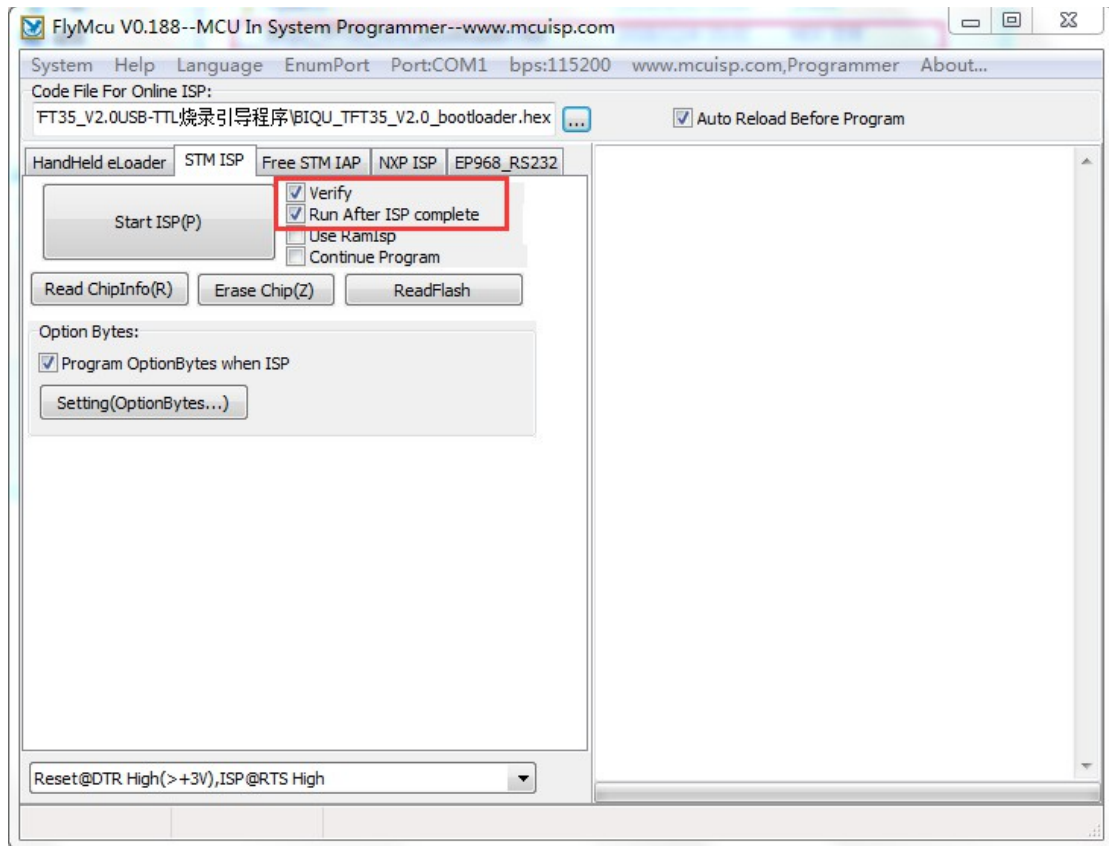
3. Install the CH340 driver software (You can find it in internet), then connect the TFT35 and CH340 debugger module to the computer.



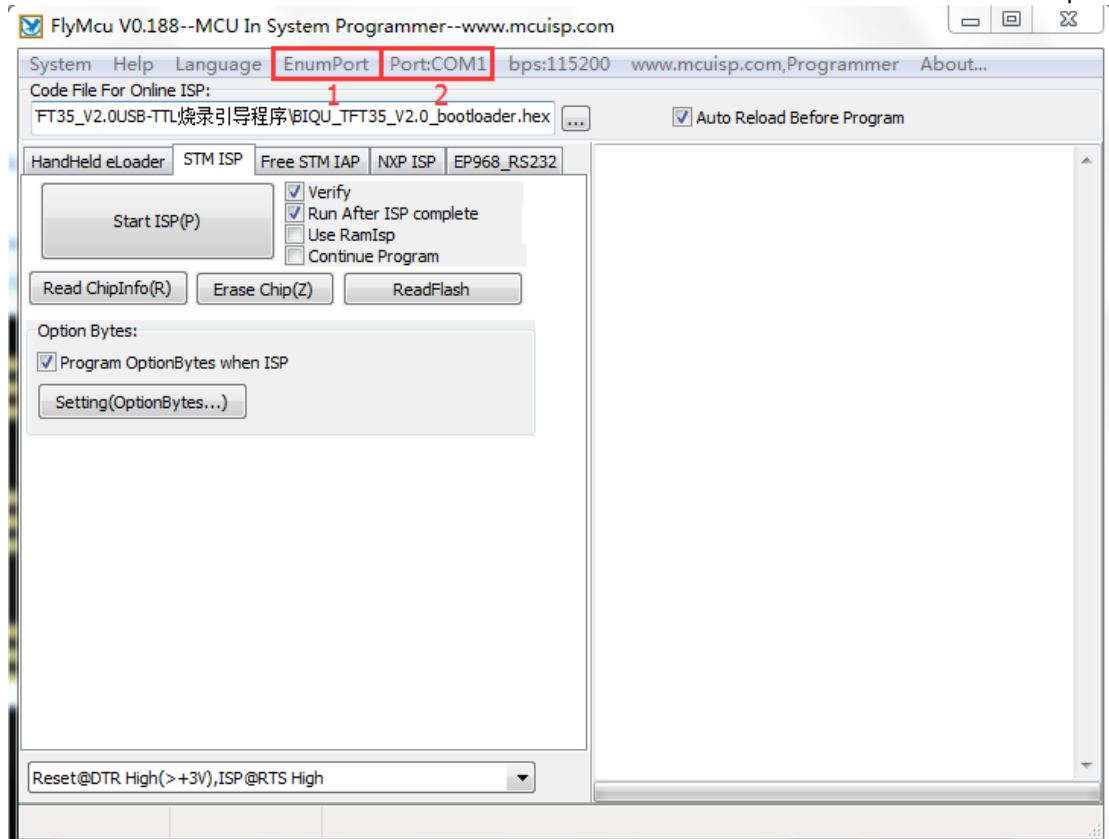
4. Open FlyMcu, select the file BIQU_TFT35_V2.0_bootloader.bin

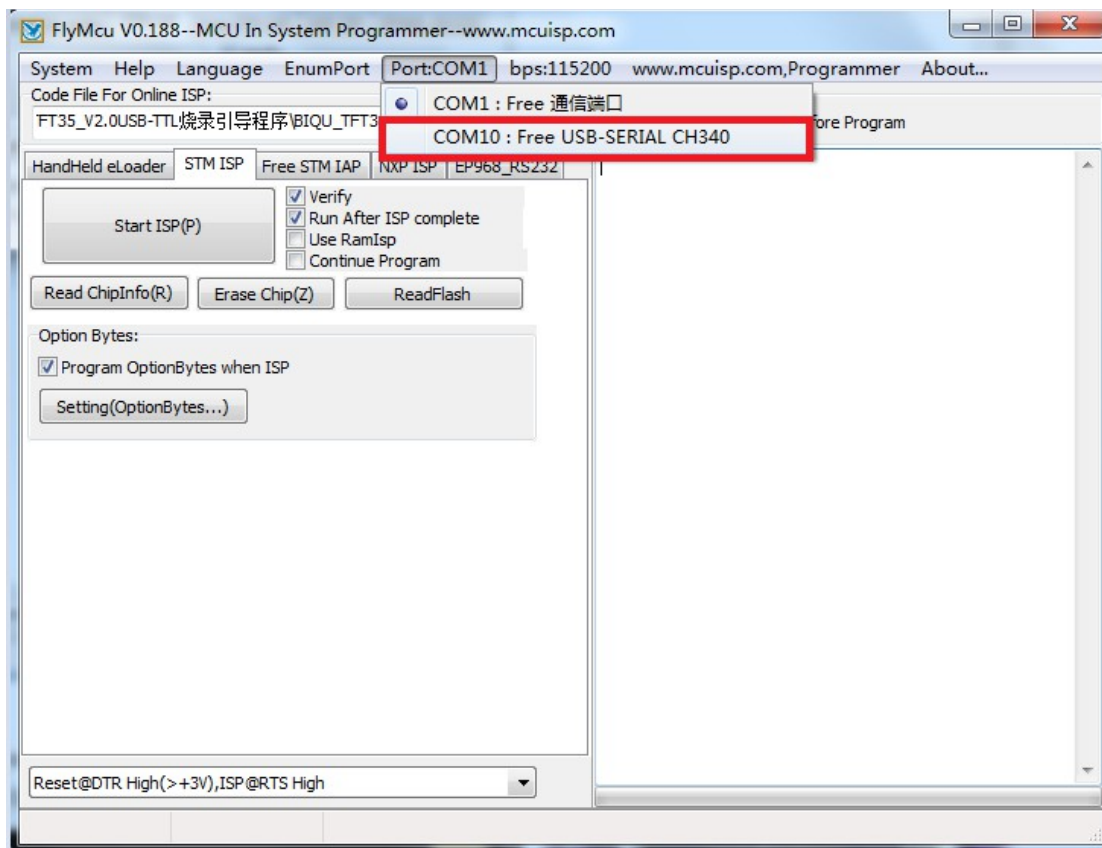


5. Choose these 2 options

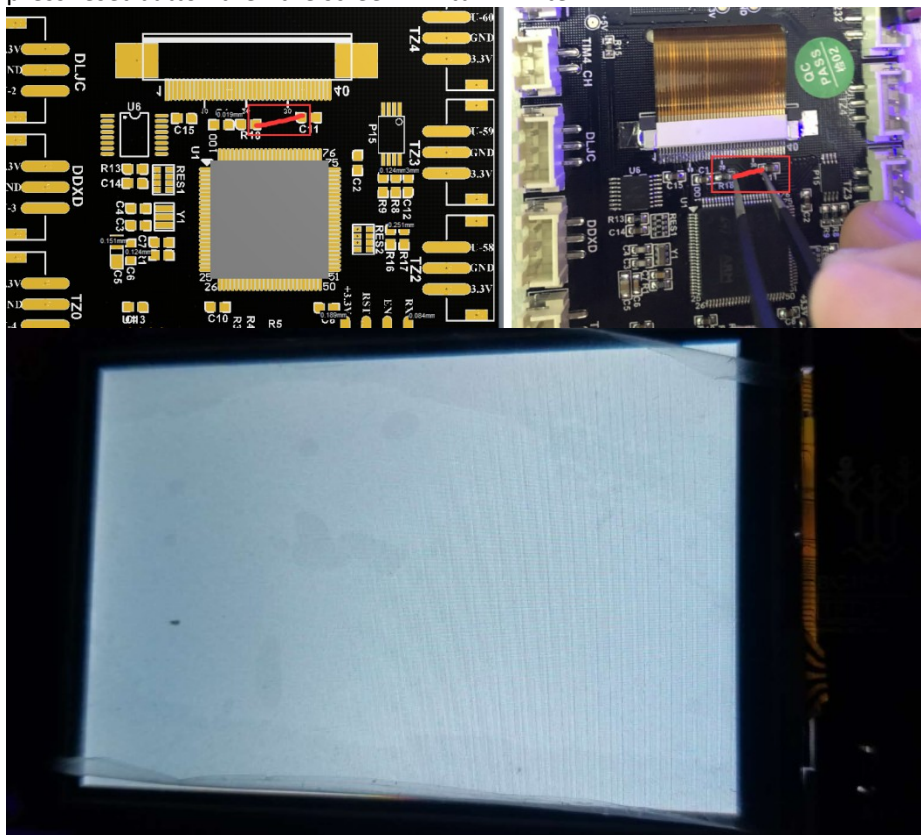


6. Click "EnumPort" and "Port:COM1" to select the correct serial port

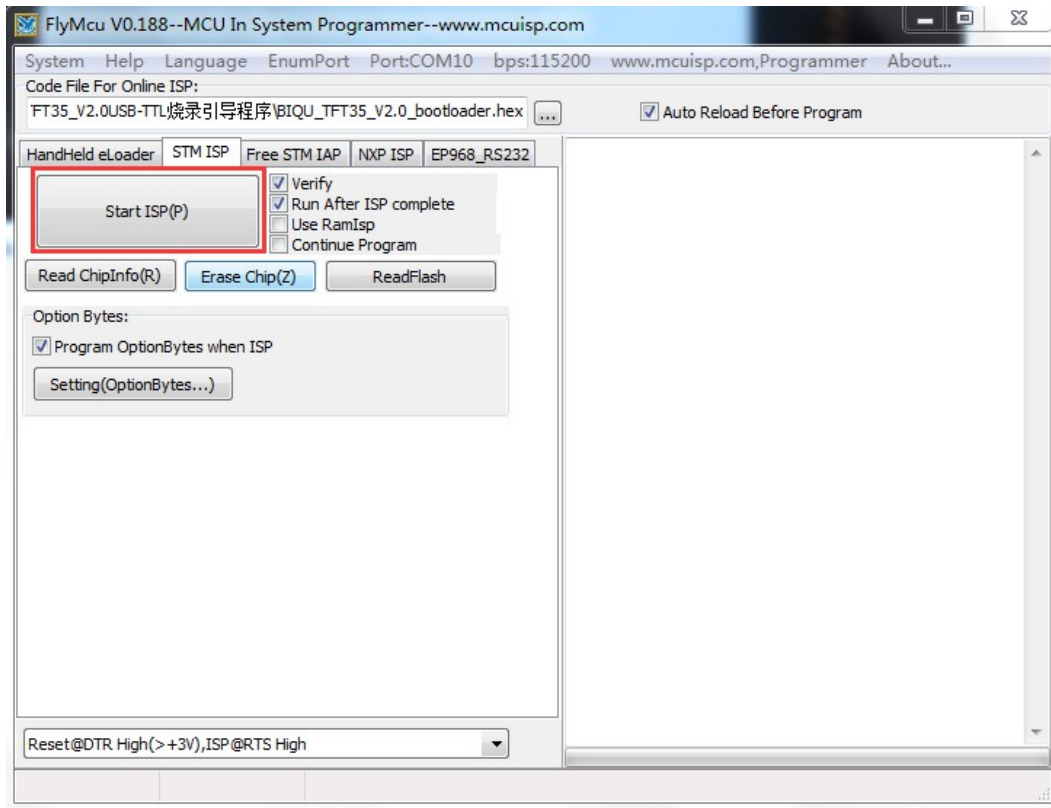




7. Use a tweezer or any other tool to connect the position shown. Hold the connection and press reset button then the screen will turn white.



8. Click "Start ISP" to flash the bootloader



9. The bootloader flashing is finished

